

LONGBOAT ISLAND CHAPEL

ACTIVE SHOOTER RESPONSE TRAINING

5/6/2019

- Learning From Longboat Key Police and Longboat Key Fire and Rescue
- Integrated With Events Guidelines

Security Committee Members:

Cindy Barnette, Richard Engel, Carol Peschel, Tom Reese, Susan Schaefer, Rick Skerrett

THE THREAT IS REAL

- 147 Shootings In Christian Churches Between 2006 And 2016
- Does Not Include Non-Christian Churches

DATE	LOCATION	KILLED/WOUNDED
MAY/ 2018	SARASOTA, FL	0/1
NOV/2017	SOUTHERLING SPRINGS, TEXAS	26/20
SEPT./2017	NASHVILLE, TENN	1/6
AUG./2016	NEW YORK, NY (MOSQUE)	2/0
AUG./ 2016	PHILADELPHIA, PA	1/2
FEB./2016	DAYTON, OHIO	1/0

SAMANTHA PUTTERMAN
BRADENTON HERALD

ACTIVE SHOOTER RESPONSE TRAINING

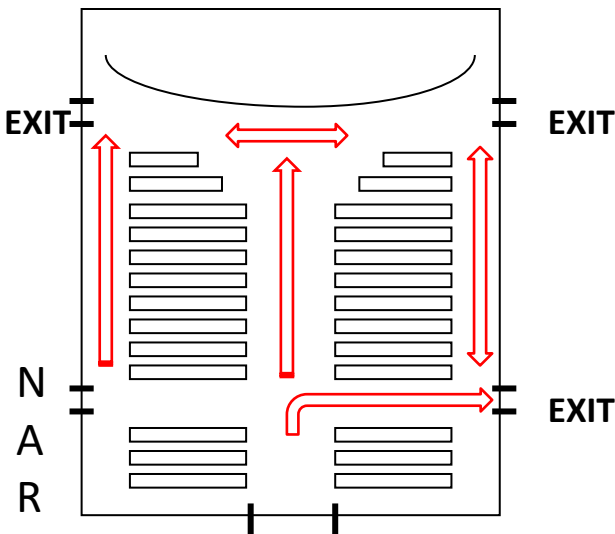
OBJECTIVE- Improve Our Survival Chances

- Make Good Decisions In The Chaos
 - Know What To Do
 - Know Where To Go
- Know Your Options
 - Consider Capability
 - (Mobility And Strength)
 - If You Can't Stay Low, Don't Go
 - Location Is Key (Your position relative to the shooter)

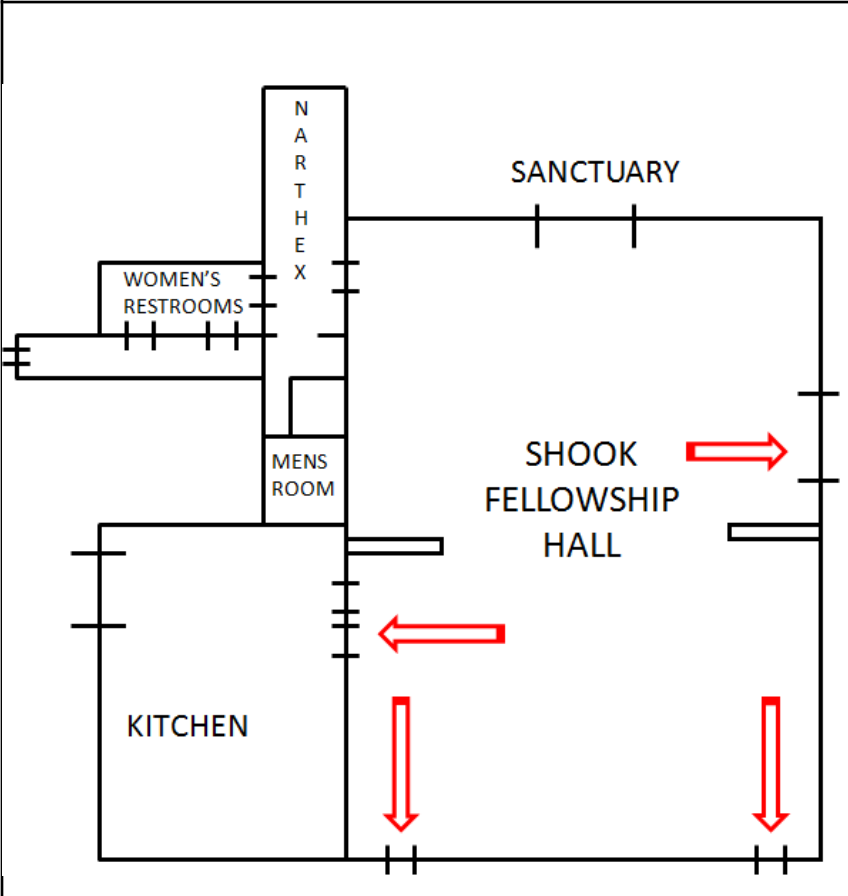
Good Decisions-What To Do

ACED MODEL	
A ALERT	<ul style="list-style-type: none">•Be Aware Of Surroundings•Identify Exits•Locate Source Of Gunfire•Take Alerts Seriously – SHOOTER!!
C COVER	<ul style="list-style-type: none">•Sanctuary – Use Pews, Get Under•Other Rooms – Closets, Bathrooms, Kitchen•Do Not Use Cell Phone Until Safe
E ESCAPE	<ul style="list-style-type: none">•Know Your Best Exit When You Sit Down•Open Hands To The Police,•Call 911 when safe
D DEFEND	<ul style="list-style-type: none">•Fight If Confronted; Don't cower•Disrupt Shooter, Throw Books everywhere•Swarm

Good Decisions-Where To Go

SANCTUARY	WHERE TO GO
 <p>The diagram shows a rectangular sanctuary with a curved front. It contains two main sections of pews, each with 10 rows. There are four exits: two on the top wall and two on the bottom wall. Red arrows indicate evacuation routes: a horizontal arrow at the top, vertical arrows pointing up from the rear of each pew section, and horizontal arrows pointing towards the side and front exits from the front of each pew section. The text 'NORTH SIDE' is written vertically on the left, and 'SHOOK FELLOWSHIP HALL' is written at the bottom.</p>	<ul style="list-style-type: none">•Use Pews For Cover<ul style="list-style-type: none">-Stay Low•Move Away From The Rear Doors•Move Toward The North Side And Front Exit Doors

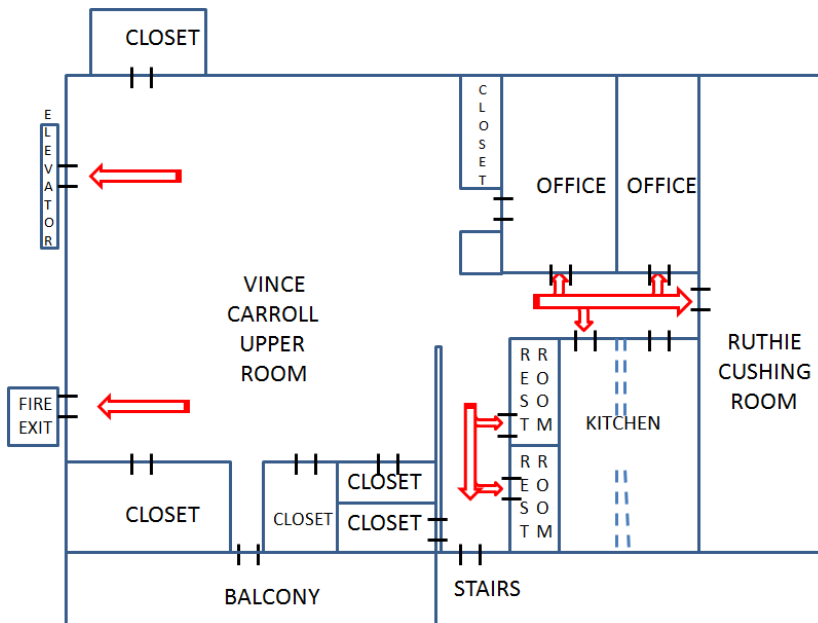
Good Decisions-Where To Go

SHOOK FELLOWSHIP HALL	WHERE TO GO
 <p>The floor plan shows the layout of the Shook Fellowship Hall. It includes a large central area labeled 'SHOOK FELLOWSHIP HALL', a 'SANCTUARY' at the top, a 'KITCHEN' at the bottom left, 'WOMEN'S RESTROOMS' at the top left, and a 'MENS ROOM' at the top center. A vertical corridor labeled 'NORTH EX' is on the left side. Red arrows indicate safe areas and exits: one arrow points right from the hallway into the Shook Fellowship Hall; another points left from the hallway into the kitchen; two arrows point down from the hallway towards the rear exit doors at the bottom of the hall.</p>	<ul style="list-style-type: none">• Move Away From The Front Doors• Move Toward The Kitchen, North Side And Rear Exit Doors• Barricade In Bathrooms, Closets If Necessary

Good Decisions-Where To Go

VINCE CARROLL UPPER ROOM AND RUTHIE CUSHING ROOM

WHERE TO GO



- If You Can't Escape, Barricade (tables, bookcases, etc.)
- Move Toward The
 - Kitchen
 - Ruthie Cushing Room
 - Fire Exit

AFTER THE EVENT

Engaging Police and EMT's

- Do not hold cell phones
- Show open hands to all personnel

Help The Wounded- **STOP THE BLEED**

- STOP THE BLEED Kits In The First Aid Kit
- Arms And Legs Use: Tourniquet
- Torso: Use Compression

THANK YOU